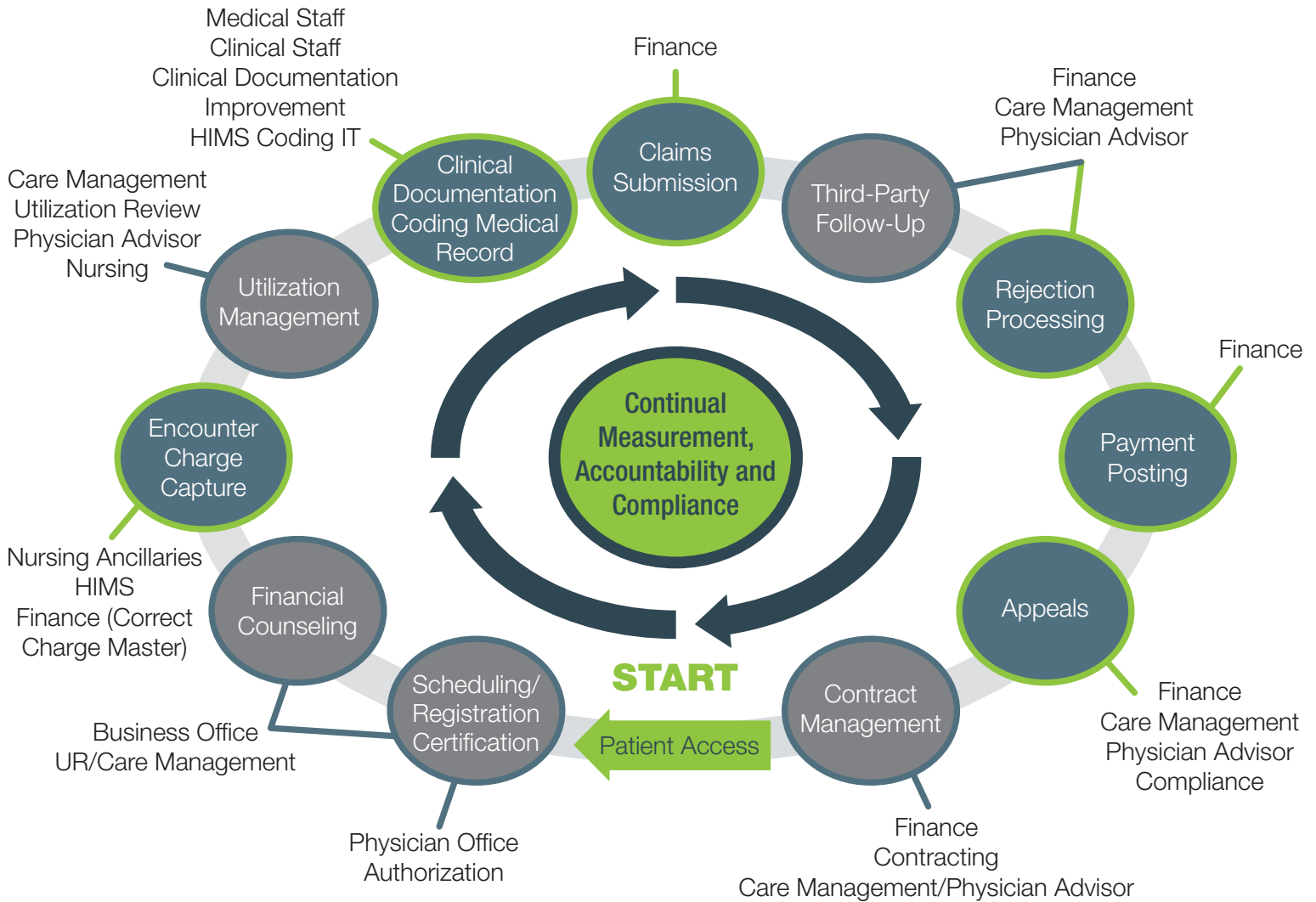




National Association of Healthcare Revenue Integrity

Components of Revenue Integrity



Claim Submission

Before claims are submitted to payers, they need to be tracked to ensure that they meet coverage policies. Many commercial payers, for example, require pre-authorization for services. Review local requirements to ensure that your claim submission meets medical necessity. Consider automatic submissions and analytic reporting to speed up your processes and find areas for improvement.

Charge Capture

Capturing information from medical claim documents, the charge capture system is a critical component to ensure payment for services used during procedures. Correct charge capture can assist with proper coding of procedure intensity. When monitoring your system's charge capture processes, consider the following:

- Who is going to capture these charges and how?
- Are there system reports that will be helpful in evaluating or streamlining the charge process?
- Is it cost prohibitive to capture certain charges?
- How can your electronic medical record and other systems assist with charge capture?
- Is a manual charge sheet required, or can the electronic record produce a computerized charge sheet?
- When will the charges be captured?